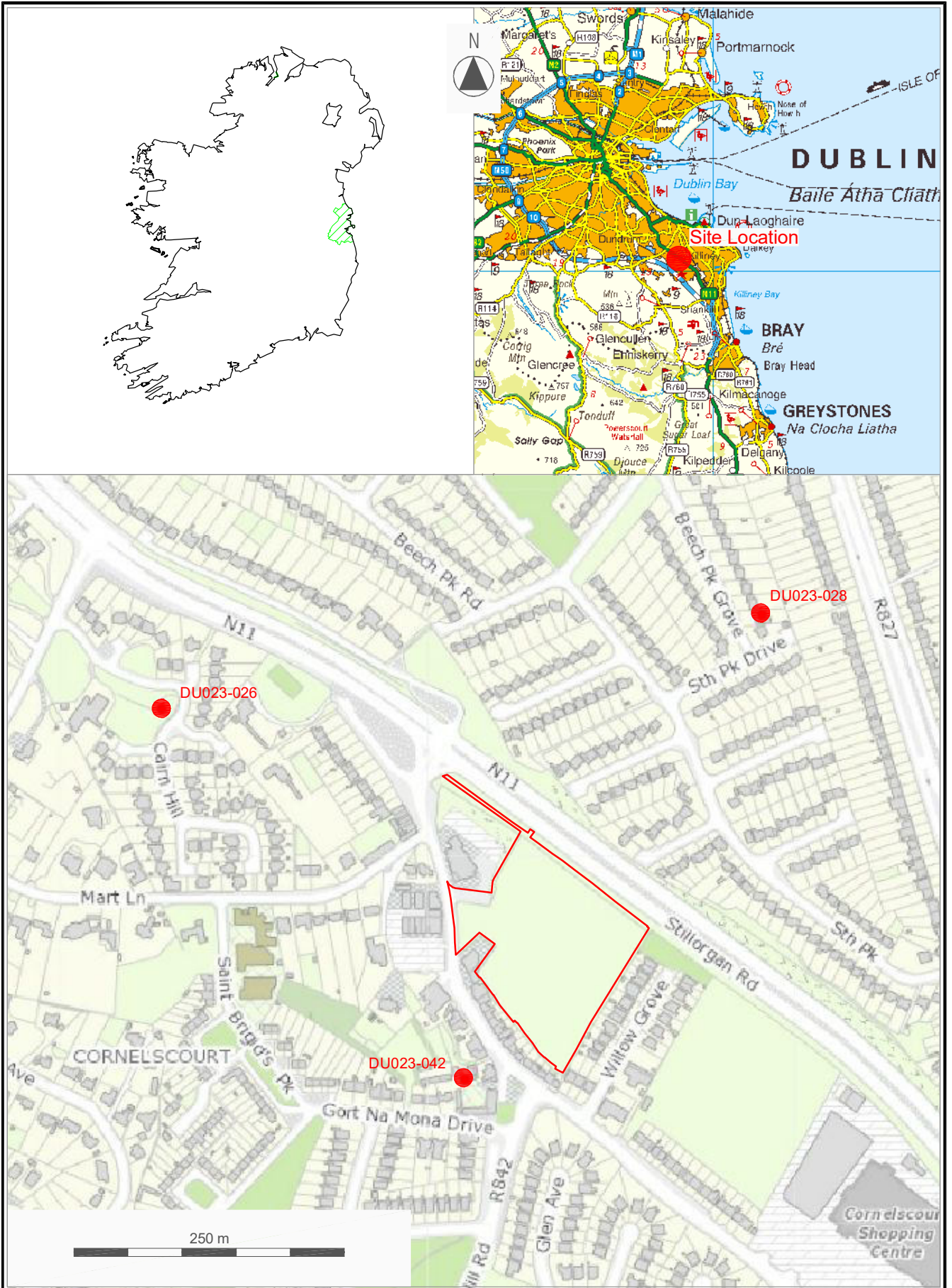


Appendix 16.1




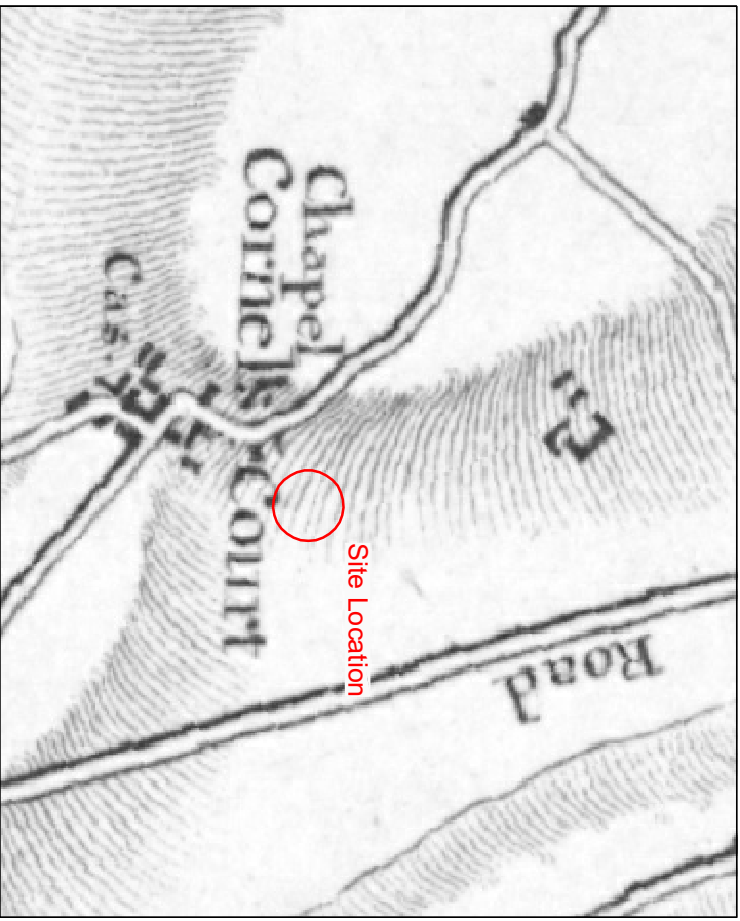
	Unit 8 Beat Centre Stephenstown, Balbriggan, Co. Dublin	Scale: 1:5000 A4 Date: Jan 2019
	Client: Cornel Living Ltd.	Origin: archaeology.ie Ref: 2019_11_AIA_01

Figure 1: Location of site and surrounding RMP's



- (i) Rocque 1760
- (r) Taylor 1816



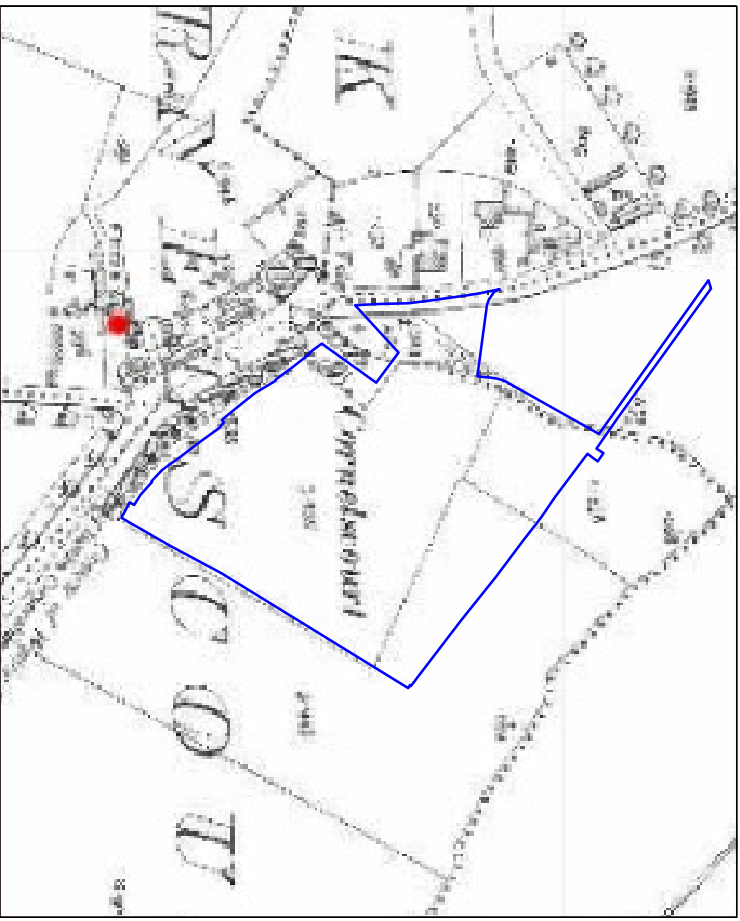
Unit 8 Beat Centre
Stephenstown,
Balbriggan,
Co. Dublin

Cornelscourt, Co Dublin
Archaeological Impact Assessment

Client: Cornel Living Ltd.
Origin: South Dublin Co. Co.
Ref: 2019_11_AIA_02

Scale: Not to scale
Date: Mar 2019

Figure 2: Extracts from early historical maps (i)



(i) 1st Edition OS Map (1844)
(r) OSI 25" Map (1906-09)



Unit 8 Beat Centre
Stephenstown,
Balbriggan,
Co. Dublin

Cornelscourt, Co Dublin
Archaeological Impact Assessment

Scale: Not to scale

Date: Mar 2019

Origin: OSI

Ref: 2019_11_AIA_03

Client: Cornel Living Ltd.

Figure 3: Extracts from early historical maps (ii)



- (i) Digital Globe
- (r) Google Earth 24-06-2018



Unit 8 Beat Centre
Stephenstown,
Balbriggan,
Co. Dublin

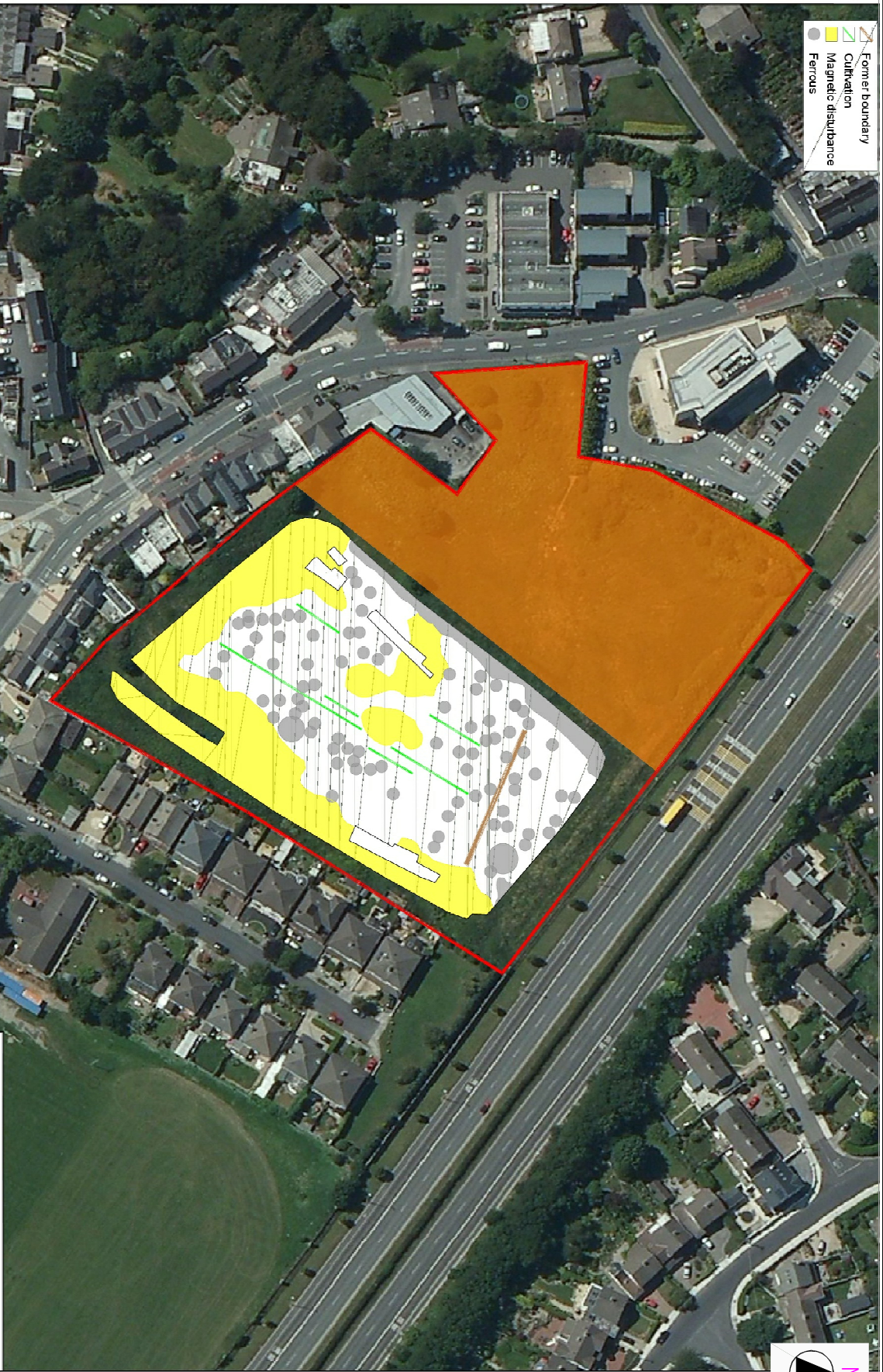
Cornelsscourt, Co. Dublin
Archaeological Impact Assessment

Client: Cornel Living Ltd.

Scale: Not to scale
Date: Mar 2019

Origin: OSI & Google Earth
Ref: 2019_11_AIA_04

Figure 4: Extracts from aerial photographic sources



Drawing: _____
 Investigation: _____
 Project: Landis in Cornelscourt



Unit 8 Beat Centre
 Stephenstown,
 Balbriggan,
 Co. Dublin

Cornelscourt, Co Dublin
 Archaeological Impact Assessment
 Client: Cornel Living Ltd

Scale: DNS
 Date: March 2019
 Origin: Target Geophysics
 Ref: 2019_11_AIA_05

Figure 5: Geophysical survey data 19R0038



Unit 8 Beat Centre
Stephenstown,
Balbriggan,
Co. Dublin

Cornelscourt, Co Dublin
Archaeological Impact Assessment
Client: Cornel Living Ltd

Scale: 1:1000 A4
Date: March 2019
Origin: Archer Heritage
Ref: 2019_11_AIA_06

Figure 6: Test-trench layout



Plate 1: Site from SW corner with N11 in background (Old Bray Road to left)



Plate 2: From SE corner of site with AIB Bank to right



Plate 3: Southern boundary of site looking east towards N11



Plate 4: NW corner of site showing area previously topsoil stripped.



Plate 5: Looking west towards Old Bray Rd and Cornelscourt village



Plate 6: Trench 1 looking south-west



Plate 7: Trench 2 looking south-west



Plate 8: Trench 3 looking north-east



Plate 9: Trench 4 looking south-west



Plate 10: Trench 5 looking north-east



Plate 11: Trench 6 looking south-west



Plate 12: Trench 7 looking north-east



Plate 13: Trench 8 looking south-west